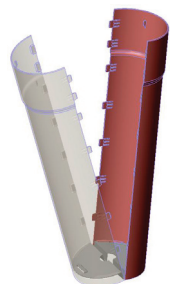




## Base Unit Assembly

Regular



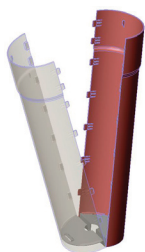
1. Insert base disc into each half with flush (smooth) side facing upwards.
2. Clip two halves together

Large



1. Clips two halves together.

Small



1. Clip two halves together
2. Push base disc into place, once halves assembled

## Step One



Screw or double sided tape bottom (A) bracket to wall approx. 100mm or 4" from floor. (See overleaf for bracket instructions)

## Step Two



Fit base into bottom bracket and screw top of unit (marked X) to wall using wall plugs as required, or optional bracket, for fixing see overleaf.

## Step Three



Insert cartridge into top of base with opening facing forward

## Step Five



Replace full or used cartridge, weekly, two weekly, maximum monthly.

## Step Four



Install flap into cartridge clip under one side then clip other side into place



# Installation Instruction Sheet

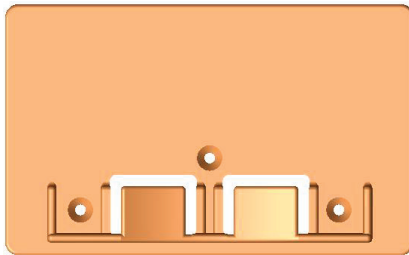
# Wall Mounting Options

- OPTION ONE: Directly screw into wall  
OPTION TWO: Double sided tape to wall

## FIXINGS NOT SUPPLIED

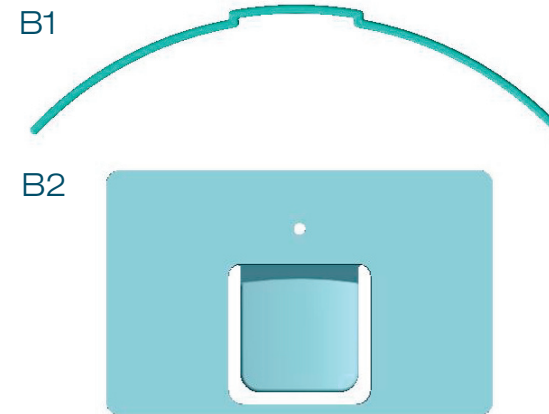
4x self tapping screws  
4x wall plugs  
Double sided foam tape (optional if required)

### A. Compulsory Bottom Bracket



Screw or double sided foam tape to wall  
- approx. 100mm or 4" from floor.

### B. Optional Top Brackets



N.B. Only required when screw fixing in step two is not desirable.

Double side tape B1 to top of base. Fit B2 into B1, double side foam tape back to B2 and fix against wall.

